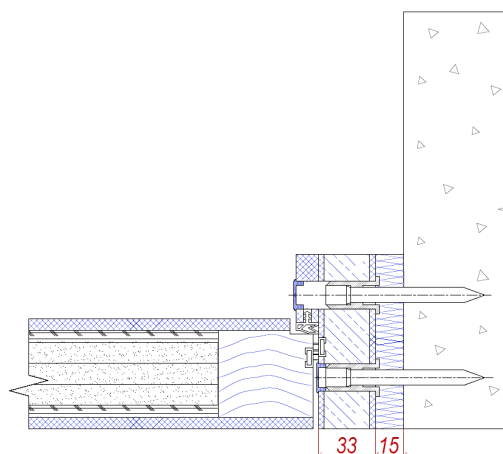
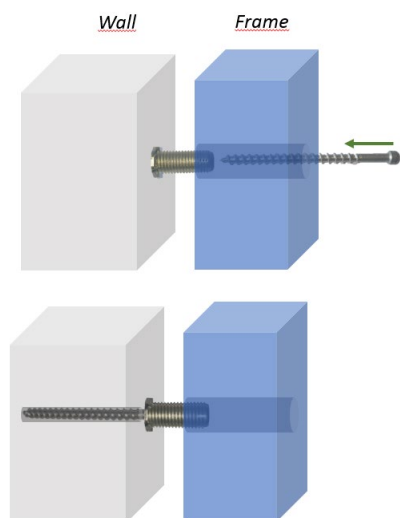
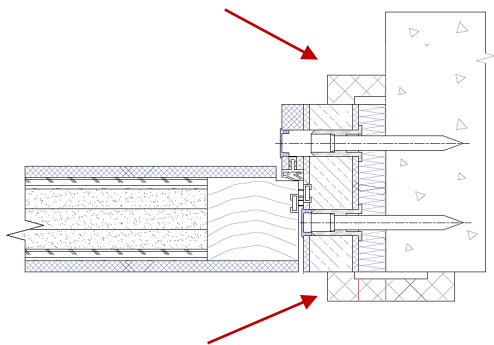


## INSTALLATION GUIDE

1. The installation of the doors produced by *Liva AB Nord* has to be started only after the finish of walls and the ceiling is fully completed.
2. The door frame has to be fixed in the wall opening by use of the *Adjufix* sleeves for a wooden frame.
7. The gap between the door frame and the wall opening should not be bigger than 15 mm. After the fixing of the door frame in the wall opening the gap between the frame and the wall has to be filled with mineral-wool (>50 kg/m<sup>3</sup>) or PU foam *Soudal FIRECRYL FR*.



3. The wall material, which can be wood, concrete, steel, lightweight concrete, haydite, etc determines the choice of fixing. Make sure to select a suitable ESSVE fixing. The screw shown in the image is supposed for fixing the door frame into a concrete wall. Screws are not supplied by the producer. For selection of the screws please see table below.
4. The deviation from the vertical position in any direction is not allowed to be more than 1mm per 1m of length. In order to ensure the accuracy of the vertical position the levelling has to be carried out. **!** Please pay attention to precise levelling as it is crucial for door to operate correctly.
5. In order to fix the side parts of the frame according to one and other *Adjufix* screws for lightweight concrete, aerated bricks and Leca blocks has to be used. By use of the screws the side parts of the frame have to be fixed to the wall. In rooms where there is a floor level difference the door installation must be started from the highest point of the floor.
6. The gap between the door frame and the wall opening must be maintained equal all around the frame.
8. There will be drilled holes for the *Adjufix* system both in the thickest and the thinnest parts of the frame placed in different levels. Essve Indu-prog sleeves are placed as follows: 28 mm sleeves (3pcs per side) in the thinnest part of the frame and 38 mm sleeves (4pcs per side) in the thickest part of the frame.
9. In case the humidity in the area where the doors are mounted is increased, the door frame has to be fixed with around 1-2mm distance from the floor. In such cases the door frame should not have a direct contact with the floor.
10. Install the door leaf into the door frame.
11. When the door leaf is fixed into hinges the gap between the door leaf and the door frame is not allowed to be greater than 3.5 mm. The gap between the door leaf and the door frame has to be constant all around the door leaf.
12. After the installation of the frame it must be made sure that all the screws for fixing mechanisms, handles and hinges are tightened. If the position of the door leaf needs to be adjusted, it has to be done by adjusting of screws according to the instruction given by the producer of the screws.
13. For fire-resistant door installation gaps should be covered with architraves or panels from both sides. The reaction-to-fire class of a material that is used for the covering of the installation gap should not be lower than D-s2, d0.



14. The grooves for screws should be covered with plastic caps. In case over time door regulation is needed the cap should be removed and put back after the regulation is done.

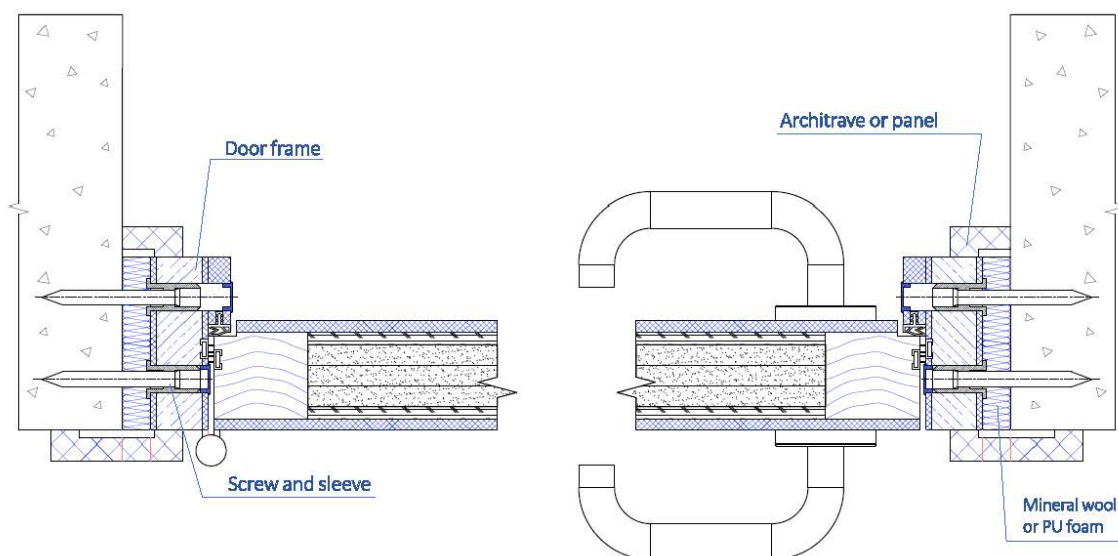
15. The drop-down thresholds should be regulated so that the seal meets the ground but does not

disturb normal opening and closing of the door (please see regulation instruction).

16. The installation of the doors has to be carried out by certified professionals with experience in door installation. In case of uncertainty during the door installation process it is obligated to contact the producer to ensure the quality of the door installation and further maintenance.

✉ [info@livaabnord.lv](mailto:info@livaabnord.lv)

☎ +371 2922 83 11    🗣 ENG



### SCREW TYPE CHOICE

Wall type	Wall code	Wall thickness	Sleeve type	Screw type	Screw size
Concrete wall	Vs501	>150mm	Essve Indu- prog sleeves: 28 mm (2x3pcs) and 38 mm (2x4pcs)	Screw for concrete walls	7.5x65
Brick wall	Vs502	>100mm		Screw for concrete walls	7.5x132
Masonry wall	Vs602	130mm		Screw for concrete walls	7.5x132
Brick/ Masonry wall	Vs504	~480mm		Screw for concrete walls	7.5x132
Gypsum board walls with hard profile in wall opening	Vs606	134mm		Steel screw	7.0x45mm

\* <https://www.essve.com/globalassets/import-resources/943155.pdf> (pages 8-15)